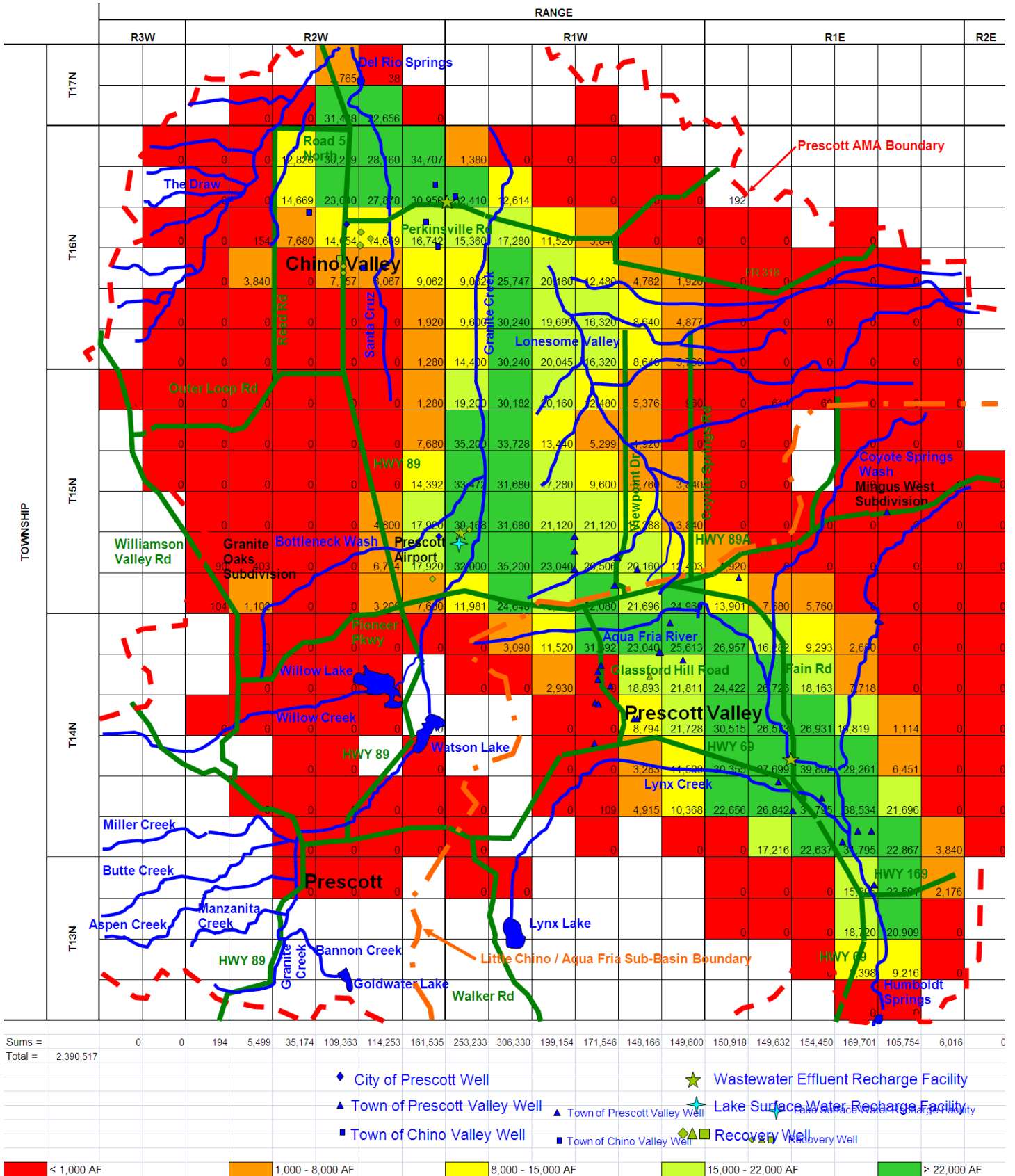


# 2009 Water Balance Calculations for the Prescott AMA

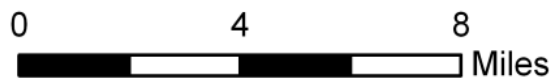
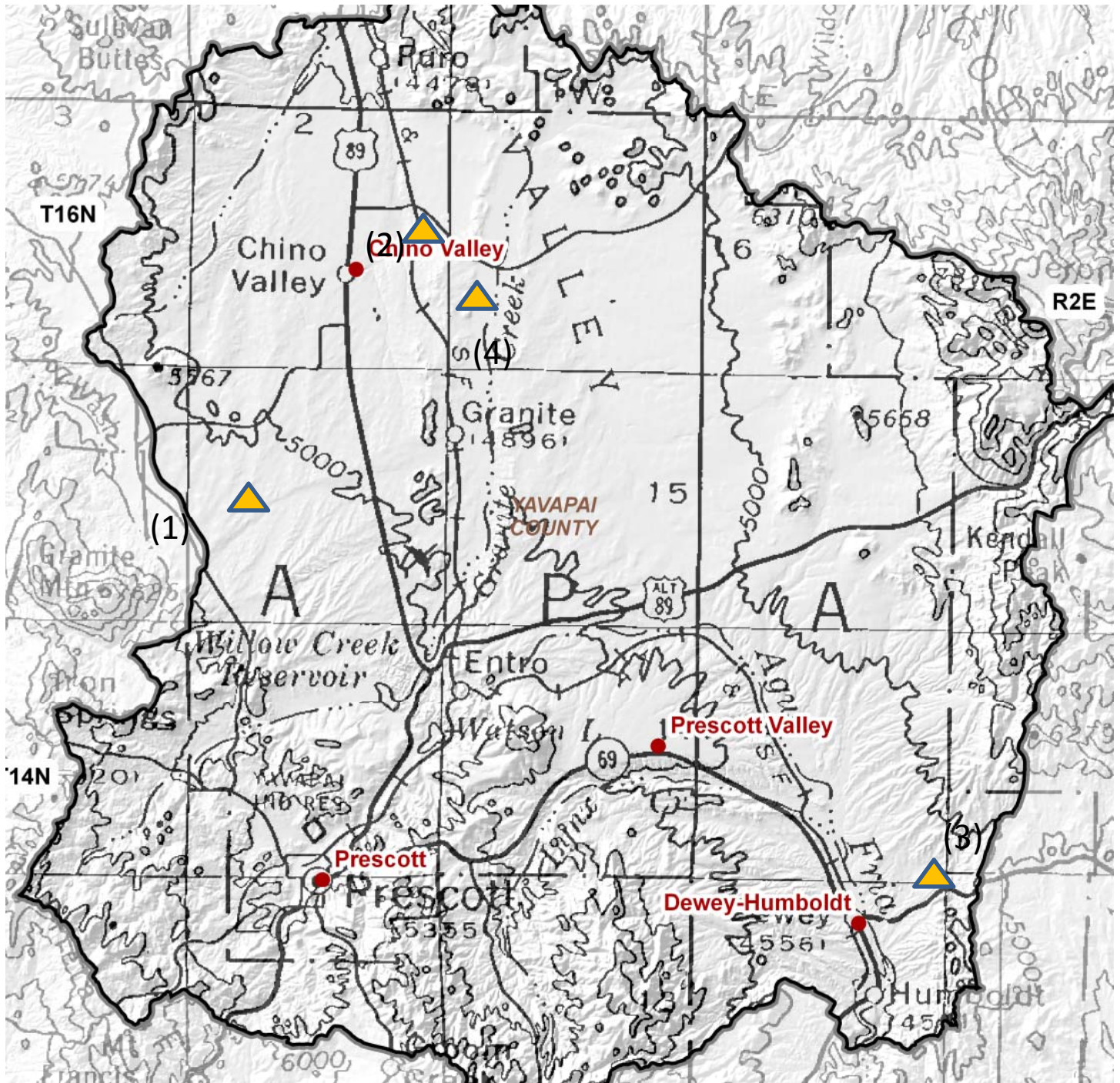
Compiled by Doug McMillan, 3/2011  
from ADWR reports.

Annotated by Pete Kroopnick

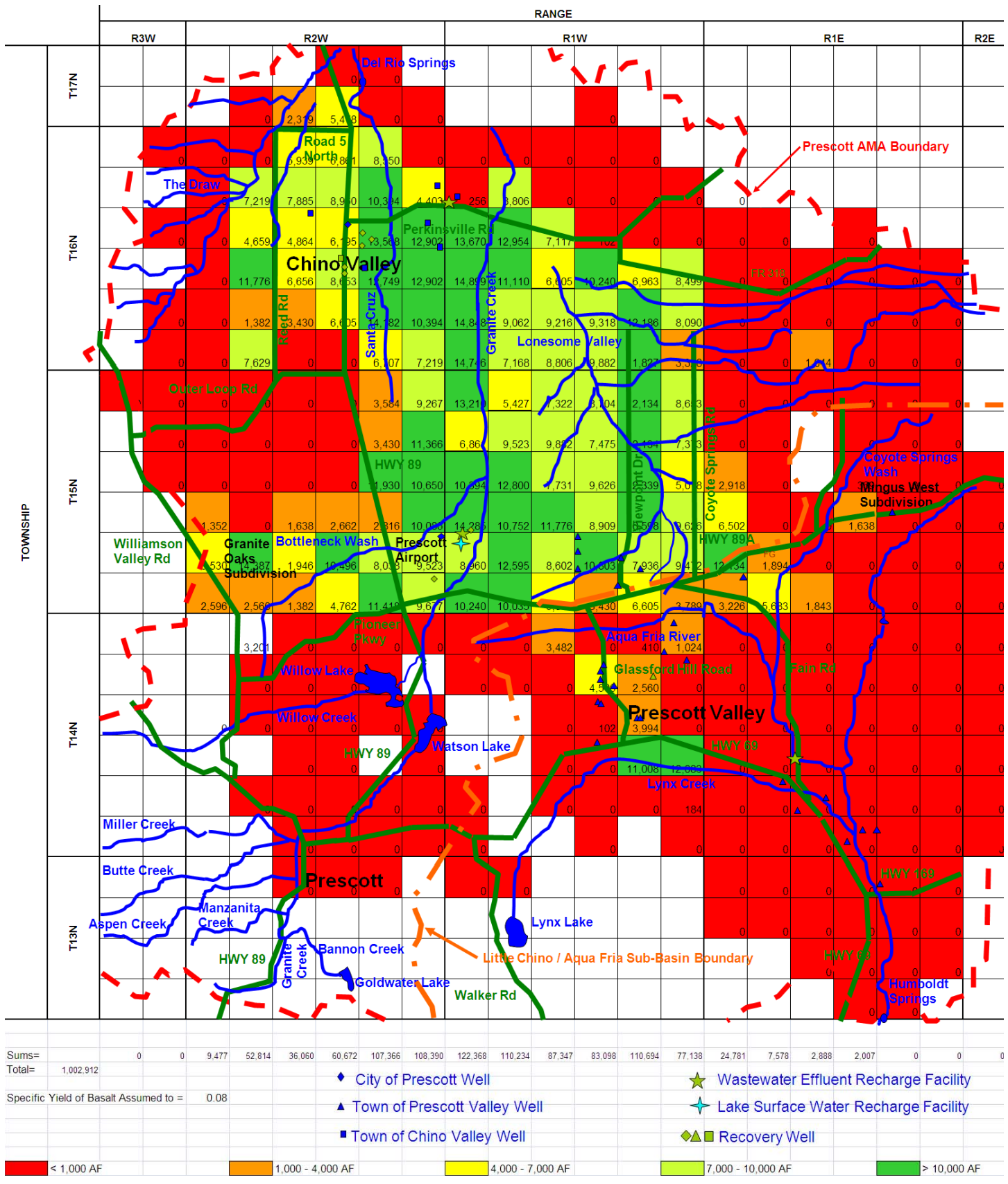
# Volume of Water in the Alluvial Unit in 2009 (acre-feet per square mile)



# Prescott AMA (scale similar to previous)



# Volume of Water in the Volcanic Unit in 2009 (acre-feet per square mile)



# Current Annual Groundwater Level Decrease (feet per year)

